



LIVINGSPACE

PIŠE / TEXT BY: DOMAGOJ KNEZ
FOTOGRAFIJA / PHOTOS BY: 2PIXEL

Brzo, jeftino, moderno, sigurno... Combo Cube

Fast, cheap, modern, safe... Combo Cube

STAN OD KOCKI

HOUSE OF CUBES

Nakon studija dizajna na Istituto Universitario di Architettura di Venezia (Sveučilišni institut arhitekture u Veneciji) uslijedila je praksa u Italiji, ali se ubrzo, puni elana i novih ideja, Ivan Doblanović i Luka Raunić vraćaju u Hrvatsku s idejom da spoje i oblikuju svoje interese i talente u zajednički studio 2pixel.

“U Italiji su smjerovi dizajna, kao i njegove upotrebe, odavna zacrtani. U Hrvatskoj još uvijek nije tako, osim par primjera, pa smo smatrali da je naše mjesto ovdje. Pojavili smo se kao pioniri tog posla, često neshvaćeni, ekstravagantni, naoružani znanjem i voljom, te odabrali teži put, baviti se industrijskim dizajnom u Hrvatskoj”, kažu Ivan i Luka.

Nije potrebno spominjati teškoće s kojima se susreću mladi poduzetnici koji trebaju tek steći povjerenje tržišta, kao i stvoriti navike o nužnosti oblikovanja u svakodnevnom životu i srušiti predrasude da je dizajn nepotreban i obavezno skup. S time su se suočili i Ivan i Luka.

Početak

“Težili smo slobodi kreativnosti, vodeći se odlukom da djelujemo tamo gdje je to najpotrebnije, a držimo da je hrvatskoj slabašnoj industriji dizajn, moderno oblikovanje proizvoda, više nego potrebno, kao i u svakodnevnom životu uopće”, kažu nam sugovornici.

Uskoro se dvojcu priključio i Arsen Brajković i tako je 2pixel punim jedrima krenuo u ostvarenje onoga što su njegovi osnivači shvatili i postavili gotovo kao misiju.

After studying design at the Istituto Universitario di Architettura di Venezia (University of Venice) they did on-the-job training in Italy, soon after, full of enthusiasm and new ideas, Ivan Doblanović and Luka Raunić returned to Croatia with the idea to combine and form their interests and talents together as the 2pixel studio.

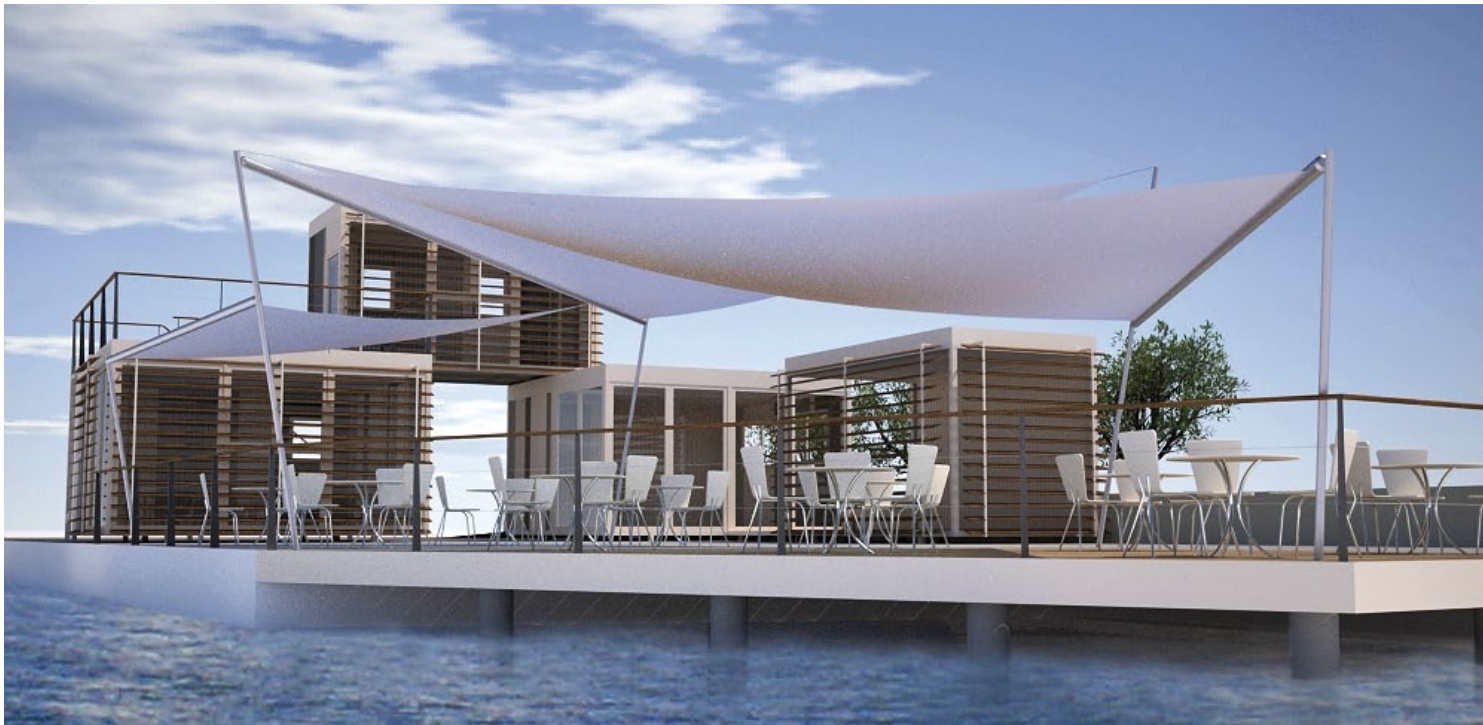
“In Italy, the directions of design and its use have long been established. In Croatia, they have not been established yet, except for a few examples, so we thought that we belonged here. We emerged as pioneers of this work and, often misunderstood, extravagant, armed with the knowledge and the will, we chose the hard way, to deal with industrial design in Croatia”, Ivan and Luka say.

It is needless to mention the difficulties that young entrepreneurs face when they have yet to gain confidence about the market and create habits of the necessity of design in everyday life and bring down the prejudices that design is unnecessary and too expensive. Ivan and Luka have experienced that, as well.

The Beginning

“We sought the freedom of creativity, and the guiding decision was to act where it was needed most, and we hold that for the narrow Croatian industry, modern design of products is more than necessary, as it is in everyday life in general”, our interlocutors say.

Soon Arsen Brajković joined the duo so, at full throttle, 2pixel went into the creation of what its founders realized and set almost as a mission.



Materijali od kojih se izrađuju moduli Combo Cube su moderni i ekološki / The materials used to produce Combo Cube modules are modern and ecological

Počeli su raditi za brodogradnju, posebno malu brodogradnju, oblikujući jahte. Drugi segment poslovanja, za kojim se pokazalo da postoji realna potreba na tržištu, iskristalizirao se kao Combo Cube.

“Vrijeme u kojem živimo nameće kriterije brze, jeftine i kvalitetne gradnje objekata koji će svojom funkcionalnošću udovoljiti širem spektru potreba te pritom pružiti potrebnu sigurnost i omogućiti uštedu energije. Rezultat našeg promišljanja je modularna prostorna jedinica naziva Combo Cube. Namijenjena je onima koji u vrlo kratkom roku žele imati funkcionalan i kvalitetan poslovni ili stambeni prostor prihvatljive cijene, prilagođen upravo svojim potrebama”, kaže Luka Raunić.

Proizvod tek izlazi na tržište pa nema sumnje da će mu i samo tržište odrediti još pokoju namjenu. Pulski su dizajneri najprije pokušali svoj dizajn “udružiti” s nekim od postojećih proizvođača sličnih modularnih komponenti, ali – nije išlo.

“Nitko nije bio spreman uložiti malo novca i truda u novi koncept i moderniji dizajn. I nije nam preostalo ništa drugo nego da sami pokrenemo proizvodnju.”, kaže Ivan Doblanić.

Moderan koncept

Combo Cube je proizvod koji nudi vrlo visoke ekološke standarde, građen je od modernih materijala koji čuvaju okoliš i dobri su termički izolatori. Svaka je kocka istih dimenzija: širine 2,45 metara, dužine 4,90 metara (to je 12 četvornih metara) i visine 2,90 metara, što omogućuje cestovni prijevoz bez dodatnog osiguranja. Svaka se kocka može drugačije opremiti, oblikovati... I što je bitno, kocke se međusobno mogu spajati u najrazličitije kombinacije i u “beskrajnom nizu”,

They started working for the shipbuilding industry, especially small shipbuilding, and designed yachts. The second segment of business, which is shown here and proved to be market necessity, was crystallized as the Combo Cube.

“The time we live in imposes the criteria of fast, cheap and quality construction in the facilities whose functionality will meet a wide range of needs and provide the necessary safety and allow for energy savings. The result of our reflections is a modular unit called the Combo Cube. It is designed for those who want to have an affordable, functional and quality business or residential area adapted to their needs in a very short time”, says Luka Raunić.

The product is in the process of entering the market so there are no doubts that a few other uses will come up, determined by the market. The Pula designers first tried to “team up” their design with some of the existing manufacturers of similar modular components, but - it didn't work.

“Nobody was willing to invest a little money and effort into a new concept and modernized design. And we were left with no other choice but to start the production on our own”, says Ivan Doblanić.

Modern Concept

Combo Cube is a product that offers very high environmental standards, it is built of modern materials which preserve the environment and are good thermal insulators. Every cube has the same dimensions: 2.45 meters wide, 4.90 meters long (which makes 12 square meters) and 2.90 meters high, which allows road transport without additional security. Each cube can be equipped and shaped differ-



*Combo Cube namijenjena je onima koji u kratkom roku žele imati funkcionalan poslovni ili stambeni prostor, prihvatljive cijene, prilagođen upravo svojim potrebama
Combo Cube is designed for those who want to have an affordable, functional business or residential area adapted to their needs in a very short time*

tako da sam kupac određuje veličinu i oblik konačnog objekta.

Materijali od kojih se izrađuju moduli Combo Cube su moderni i, rekosmo, ekološki. Betonyp kojim je obložena vanjska strana modula sačinjen je od odbačenih drvenih strugotina povezanih betonskom smjesom. Visoka otpornost na vlagu i niska termička provodljivost ovog materijala čine ga pogodnim za ovakvu namjenu. Kao dodatna termička izolacija modula, prije nanošenja fasadne mase, dodaje se sloj stiropora debljine 50 mm. Unutarnje su obloge modula od vodonepropusnog gipsa. Svi zidovi, strop i podovi izolirani su mineralnom vunom debljine 100 mm.

Dodamo li tome velike staklene stijenke od troslojnog stakla koje otvaraju pogled na prirodno okruženje, a ujedno čuvaju energiju (hlađenja ili grijanja) možemo govoriti o vrlo dobro dizajniranom proizvodu koji je po mnogo čemu jedinstven kod nas. A riječ je o potpuno hrvatskom proizvodu, hrvatskih dizajnera i proizvođača.

ently... And what is important, the cubes can be joined together in various combinations and in an "infinite series", so the buyer determines the size and shape of the final object.

The materials used to produce Combo Cube modules are modern and, as we said, ecological. Betonyp that encases the exterior surface of the modules is made out of discarded wood chips connected with a concrete mixture. High moisture resistance and low thermal conductivity of this material make it suitable for this purpose. The module has an additional thermal insulation, a 50 mm thick cladding layer of polystyrene which is added before applying the façade coating. The interior coating of the module is made of waterproof plaster. All walls, ceilings and floors are insulated with 100 mm thick mineral wool.

If we add large glass walls of three-layer glass that offer the view of the natural environment, and also preserve energy (cooling or heating), we can speak of a very well designed product that is in many ways unique in Croatia. And it is a 100 percent Croatian product, made by Croatian designers and manufacturers.

Svaka je kocka istih dimenzija: širine 2,45 metara, dužine 4,90 metara (to je 12 četvornih metara) i visine 2,90 metara, što omogućuje cestovni prijevoz bez dodatnog osiguranja.

Every cube has the same dimensions: 2.45 meters wide, 4.90 meters long (which makes 12 square meters) and 2.90 meters high, which allows road transport without additional security.



Kreativci studija 2pixel / Creatives from 2pixel studio

 24m²



 60m²



 96m²



Po želji

Svaki modul moguće je izraditi zasebno po želji kupca – veličina prozora i položaj, vrata, unutrašnji razmještaj instalacija... Upravo zato moduli, samostalno ili u kombinaciji, mogu poslužiti kao bungalovi, poslovni prostori (restorani, recepcije, klasični kancelarijski protori), vikendice, a u konačnici i stanovi. Mogućnosti primjene doista su široke. Uz dodatak sunčanih panela za grijanje vode i proizvodnju struje, moduli mogu funkcionirati i kao zasebni objekti daleko od civilizacije!

Doista raduje kada se može predstaviti jedan ovakav hrvatski proizvod, koji je i cijenom izuzetno pristupačan – spomenimo da, u prosjeku, četvorni metar potpuno opremljenog modula košta oko 500 eura. Kada spomenemo jednostavniju papirologiju i jeftiniju pripremu zemljišta te daleko bržu gradnju (15 dana od narudžbe do ključa u ruke), onda ovakav način gradnje za niz namjena – od poslovnih, turističkih, vikendaških do stambenih, postaje jako zanimljiv i konkurentan. [15](#)

On Request

Each module can be made individually at the request of the customer - the size and position of windows, doors, interior arrangement of installations... That is why modules, alone or in combination, can serve as bungalows, business premises (restaurants, receptions, classic office spaces) and, ultimately, cottages and apartments. The application possibilities are really wide. With the addition of solar panels for water heating and electric power production modules can function as separate objects far away from civilization!

It is a real joy to introduce such a Croatian product, which is exceptionally affordable – let us mention that, on average, one square meter of a fully-equipped module costs around 500 euros. When we mention simpler paperwork and cheaper land preparation, as well as much faster construction (15 days from order to having the keys in your hand), then this method of construction for a variety of needs - from business, tourism, second home to residential, becomes very interesting and competitive. [15](#)